

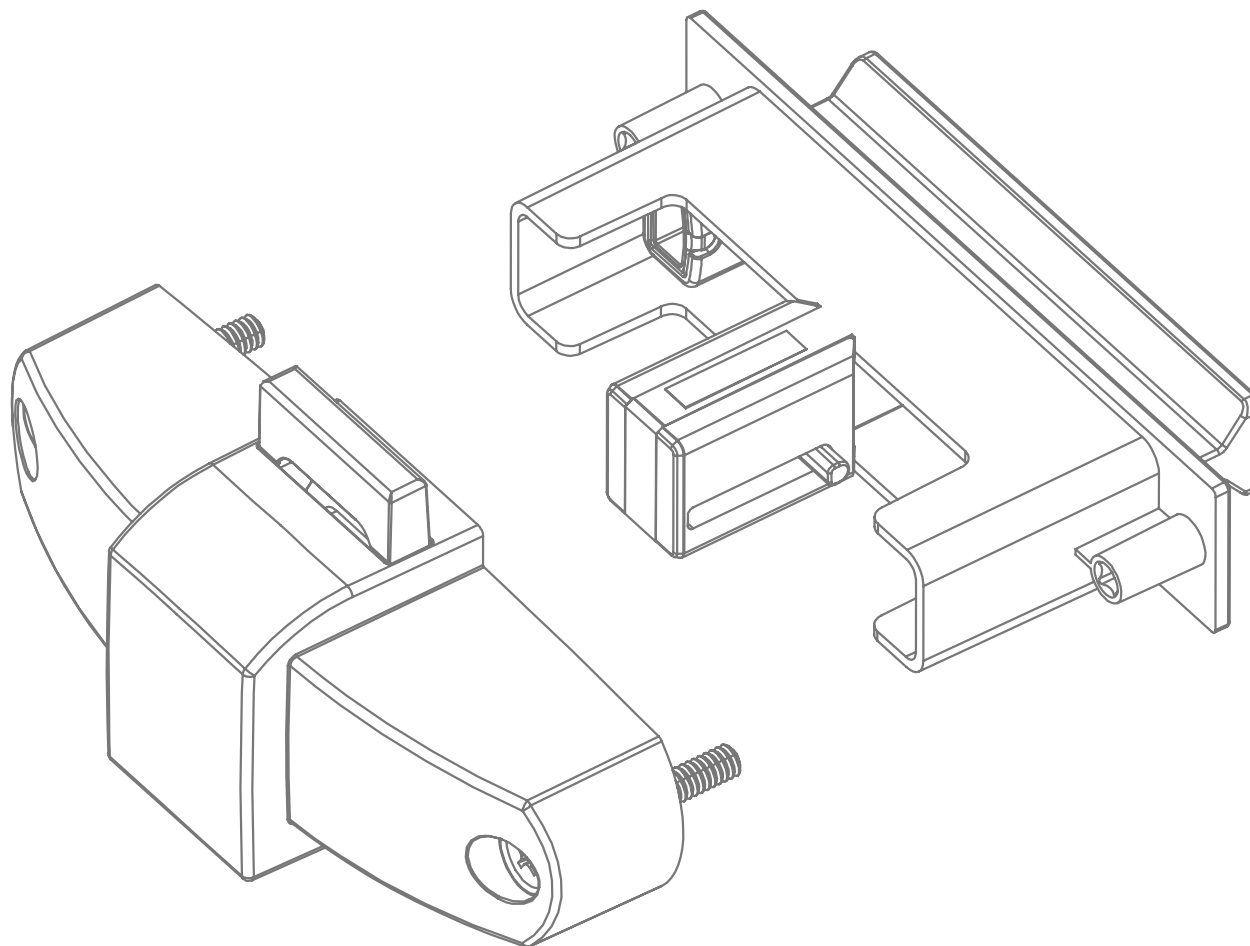


BOATING, CARAVAN AND MOTORHOME

SELECTION 2025

R-EVOLUTION HORIZON

We have further developed our patented R-EVOLUTION locking system and created R-EVOLUTION **HORIZON**, a slimline push-in lock with a comfortable grip. As with all R-EVOLUTION locks, only two components are screwed together during assembly; there is no further need for adjustment. With a wide tolerance range from 11 to 19 mm front thickness, the locks can be used in a variety of applications.



R-EVOLUTION HORIZON

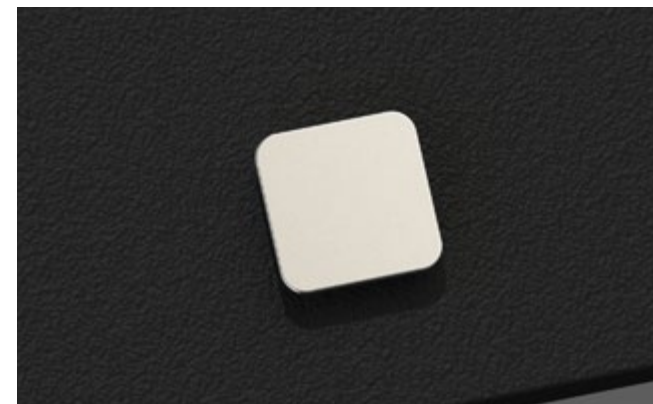


R-EVOLUTION LEVITATE



Illustration shows a study

The new product line R-EVOLUTION **LEVITATE** features push-in buttons with a barely visible base which is concealed by the functional element. The buttons appear to float above the front surfaces (for front thicknesses from 11 to 19 mm). The following designs are currently being realised and will be **available from May 2025**.



R-EVOLUTION LEVITATE



R-EVOLUTION 56549

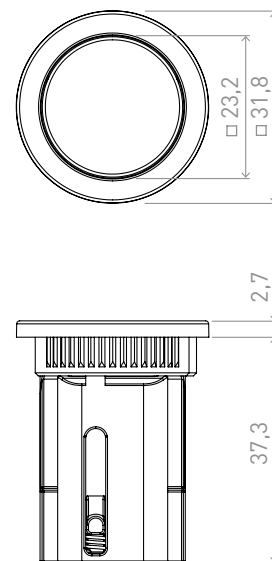


56549.0071

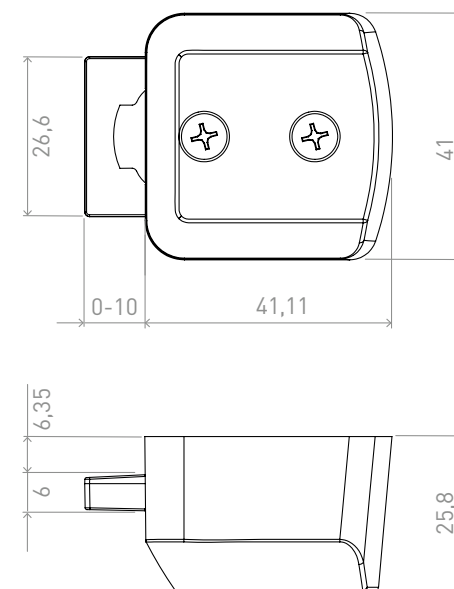


reddot winner 2024

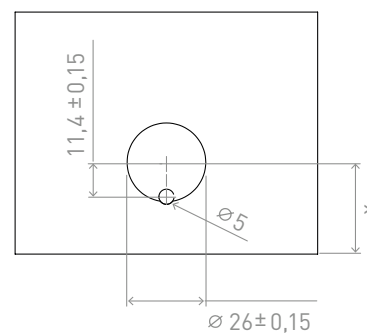
Functional knob



Lock

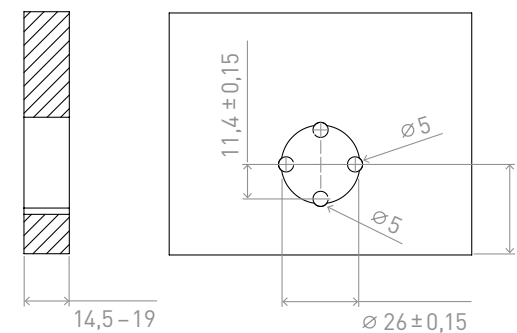


Drilling pattern



Optional drilling pattern

Lock and knob can be rotated 90° in storage box front



R-EVOLUTION 56550

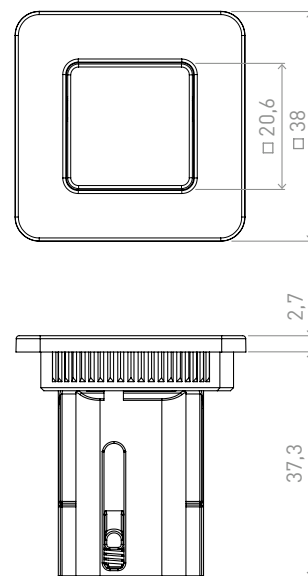


56550.0223

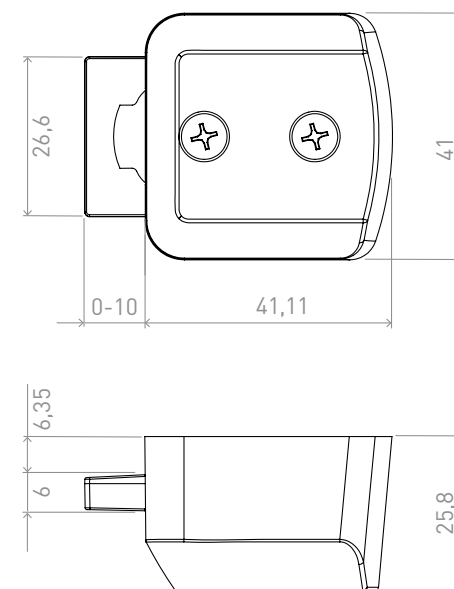


reddot winner 2024

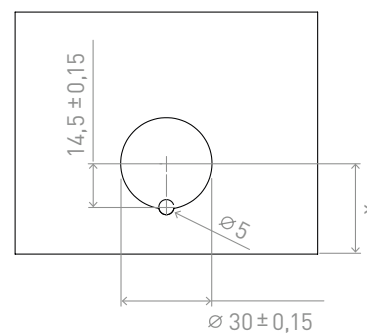
Functional knob



Lock

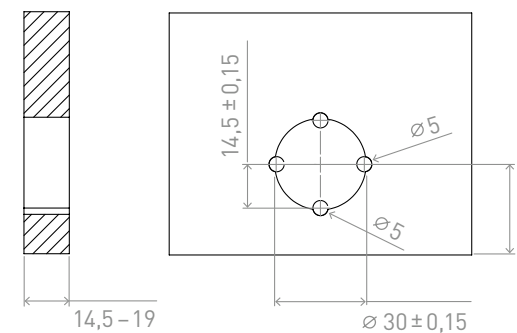


Drilling pattern



Optional drilling pattern

Lock and knob can be rotated 90° in storage box front



R-EVOLUTION 56551

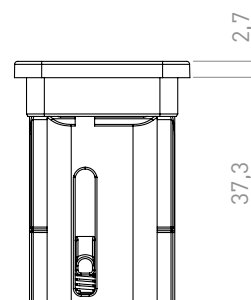
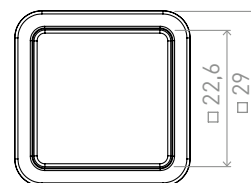


56551.0174

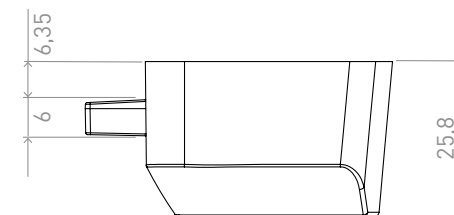
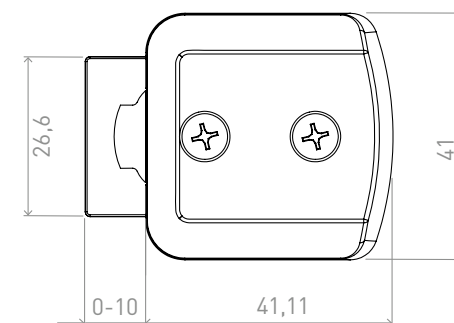


reddot winner 2024

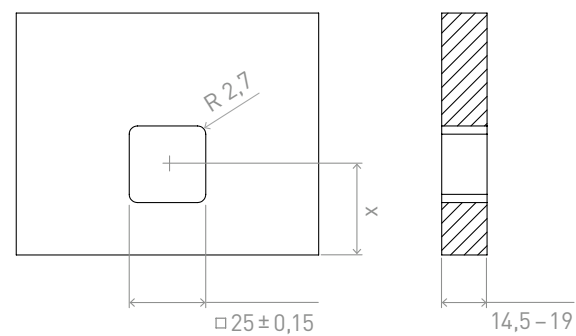
Functional knob



Lock



Milling pattern



R-EVOLUTION ESPAGNOLETTE LOCK

We have further developed our patented R-EVOLUTION locking system and equipped it with an optional espagnolette mechanism. This means that it can now also be used in high cupboard doors without any problems.

NEW



R-EVOLUTION
Set with espagnolette lock
56589.0223



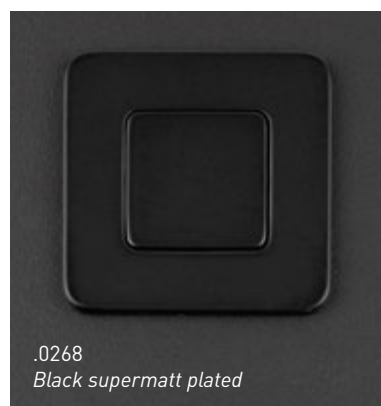
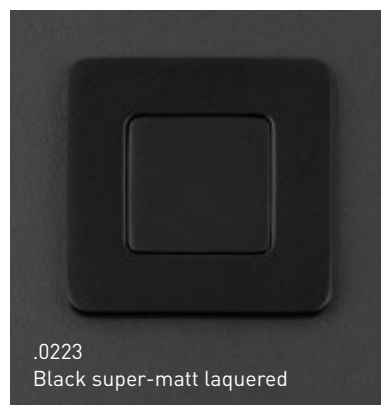
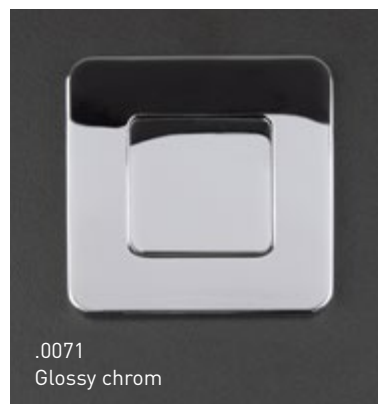
56590.0223



56591.0223

COLOURS AND SURFACES

We offer the following standard surfaces. However, we can also offer a wide range of other colours and surfaces on request.



Restrictions are possible depending on the product.

SHELLY

RECESSED SHELL HANDLE WITH LATCH LOCK

Extremely flat (for front thicknesses from 11.5 to 19.8 mm) and very elegant thanks to its small size and elegant surfaces: this is our new recessed shell handle **SHELLY** with matching latch lock.



SHELLY SL RECESSED SHELL HANDLE FOR HIGH GRIP COMFORT

SHELLY SL was created as a further development of **SHELLY**. Its dimensions adapt perfectly to larger front surfaces and offer a high level of comfort without sacrificing the elegant design. **SHELLY SL** can also be installed in front panels with a thickness from 11.5 to 19.8 mm.



SHELLY IN THE DESIGN ENVIRONMENT

SHELLY and SHELLY SL thus follow our elegant geometric design and can be perfectly integrated into the already existing design environment. This means that a wide range of functions in vehicle interiors can be visually harmonised with one other.



Caravan handle
24303



R-EVOLUTION
Push-In 56551



SHELLY
56586.0223



SHELLY SL
56611.0223

EVOLUTION 2.0 PUSH-IN LOCK

EVOLUTION – the name says it all and emphasises our approach of responding to market and customer needs. In a logical developmental step, we have initially combined our extremely flat push-in lock with a fitting collar for a standard 26 mm milling.



56570

ESPAGNOLETTE LOCK

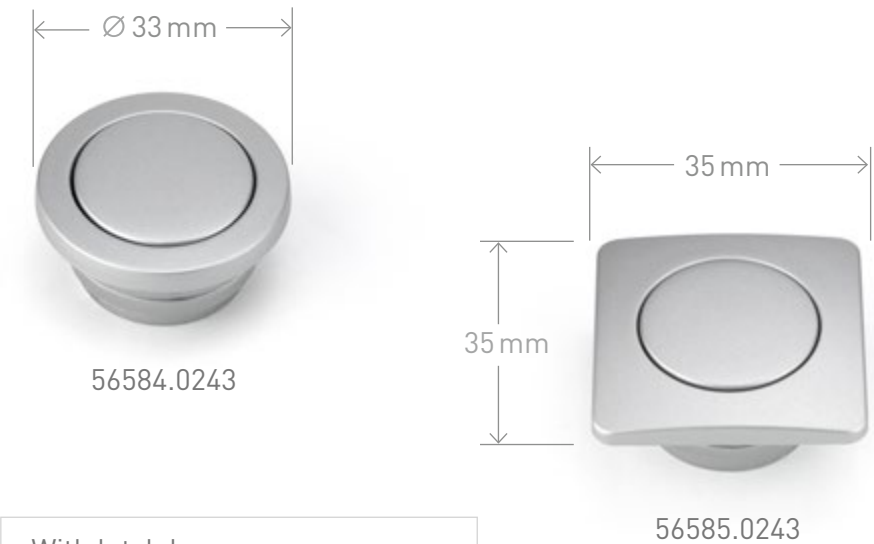
Equipping the lock with an **espagnolette function** extends its range of application and also enables it to be used for larger doors.



56498

EVOLUTION 2.0

Being a perfect match to the locks, we have realised compact, lightweight plastic knobs in two design options with high-quality surfaces.



HOOK IN SL

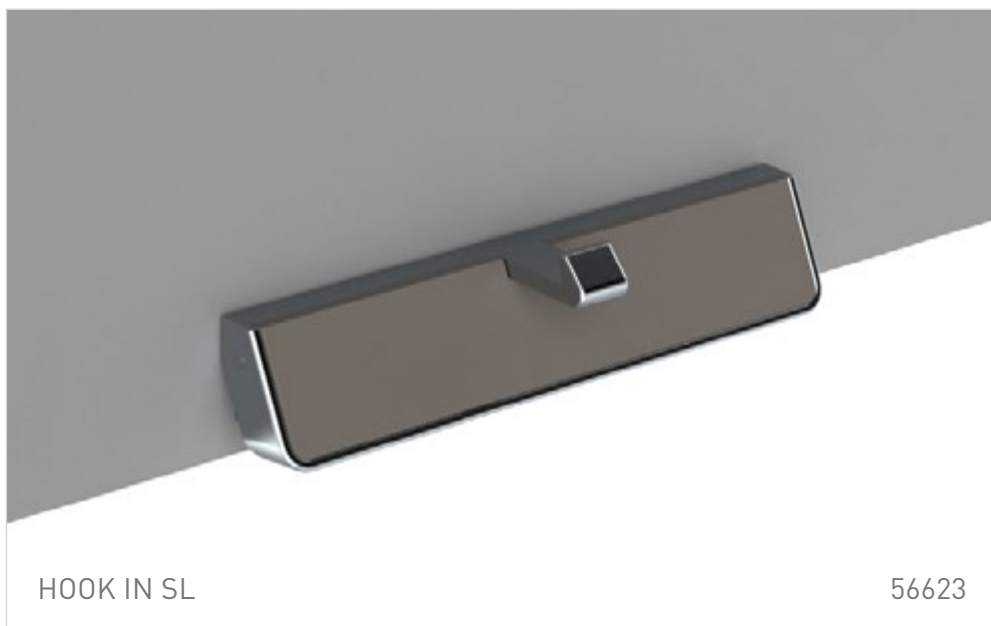
Our tried-and-tested 56351 hook-in fitting has been taken as the basis for the new SL version. With a width increased from 48 to 116 mm and the same height, we have created significantly greater handle comfort and maintain the low space requirement in the overhang of the fronts. A metal version with a plastic mounting plate and a lightweight – and more cost-effective – version made entirely of plastic will be **available from May**.



56351.0071

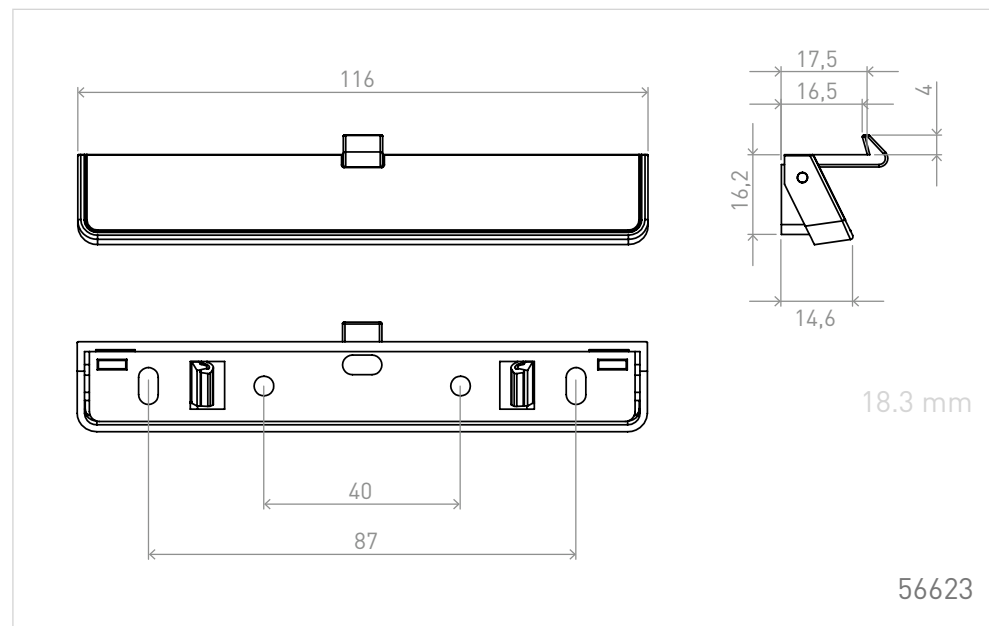


With angle bracket 56352.0152



HOOK IN SL

56623



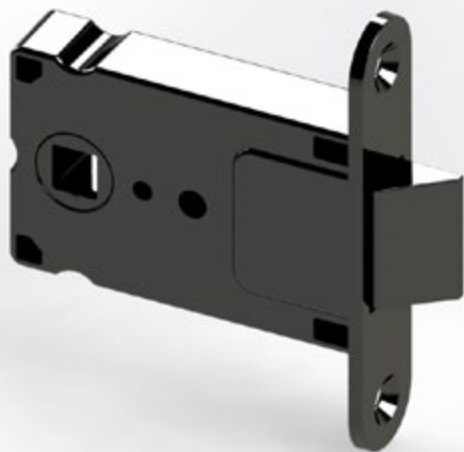
18.3 mm

56623

MORTISE LOCKS

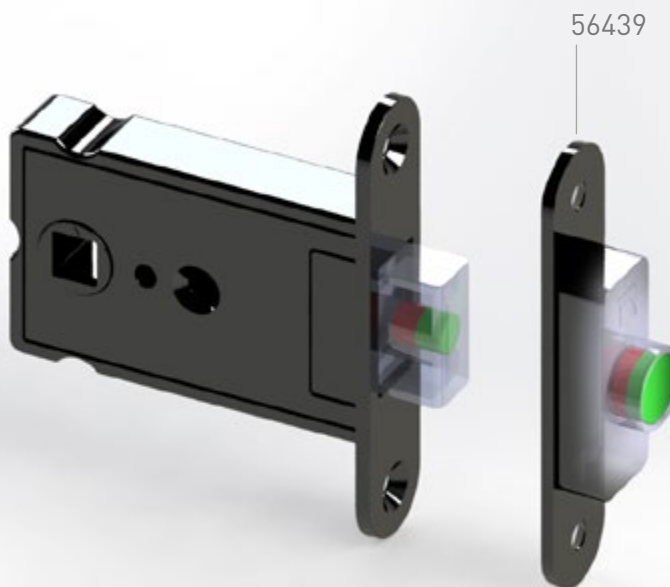
Based on the modular principle, our compact mortise locks made of lightweight plastic are also compatible with various functions.

MORTISE LOCK SPRING



Available for right and left side
56435 | 56436

MORTISE LOCK MAGNET



With latch closed when door is open
56437

MORTISE LOCK BOLT



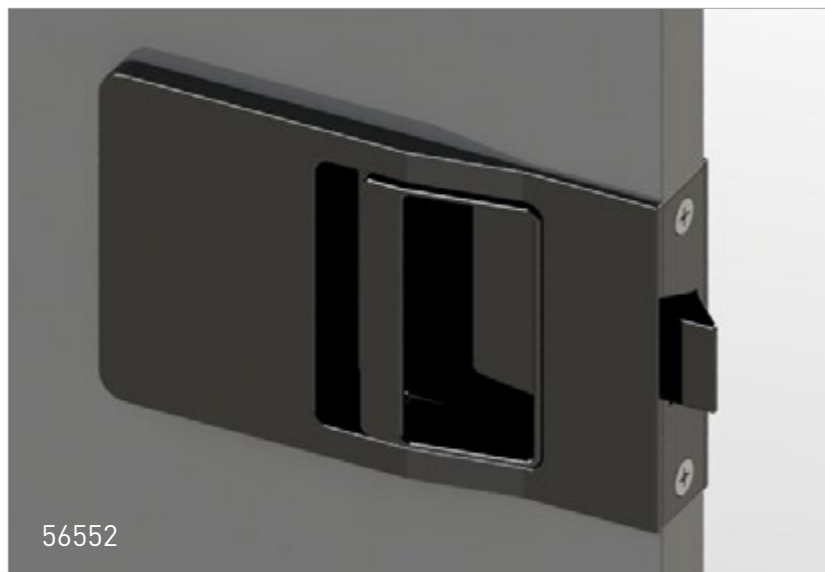
Only for locking
56438

DOOR LOCK 56552

- contemporary, compact design
- space-saving
- optionally lockable on both sides
- for doors with a thickness from 18 to 30 mm



With the option of customisation with your logo and/or your word mark, our lock becomes your brand carrier in the vehicle interior.



COAT HOOKS



56192.0071
closed



56192.0071
open



56084.0223



56042.0223



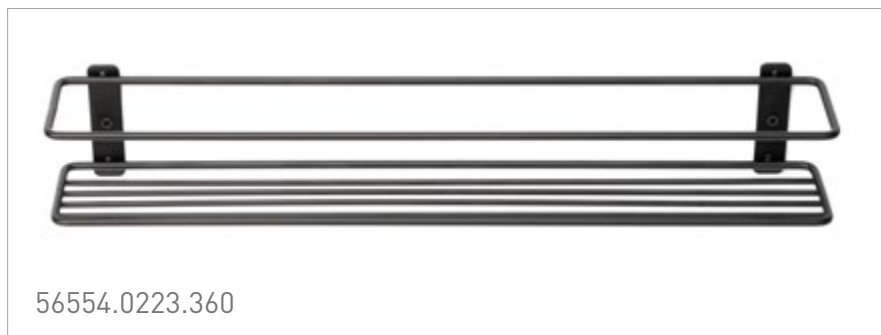
56042.7171



56042.7383

WALL RACK FOR SPICE JARS

Our new spice rack presents itself in an elegant, matt black colour and filigree metal rod look. It offers space for up to eight spice jars, secured by the top railing preventing them from falling of even in the event of strong vibrations. Two screws are used for stable wall mounting.



Product dimensions: 56554.0223.360 approx. 36 x 6 x 6 cm
56554.0223.225 approx. 22,5 x 6 x 6 cm (no image)
Material: Steel
Surface: Matt black powder-coated

Customised lengths available on request



ROLL HOLDER

Our holder for toilet rolls impresses with its clear, elegant design, low weight and easy installation. The fixing material and cover caps are included.

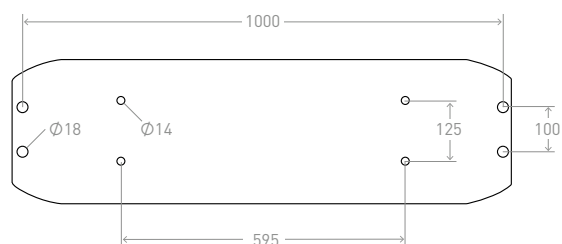


Product dimensions: approx. 18.5 x 8 x 3 cm
Drilling distance: 4.4 cm
Material: Aluminium
Surface: Matt black powder-coated

SANDBOARD KIT

Made from robust, wear-resistant plastic, our sandboards offer a strong grip in sand, mud or snow – ideal for motorhomes and camper vans. The integrated mounting holes enable easy installation on the vehicle, e.g. on the roof rack or on an airline rail.

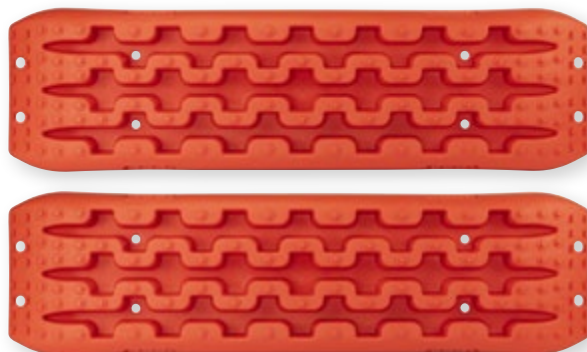
Hole spacing (mm):



Product dimensions: approx. 106 x 30 x 6.5 cm

Material: plastic

Colour: red or black



Kit 56642.2002



Kit 56642.0019



CONTACT

Dirk Pönnighaus

Sales

Phone +49 5734 9609-63

Mobile +49 151 67037825

dirk.poennighaus@confurn.de

www.confurn.de/en